

This is our monthly newsletter. The newsletter can be received by anyone who has an e-mail address. To subscribe to this service please send your e-mail address to: northstaffscircuit@hotmail.co.uk.

Dear Friends,

God loves **YOU**. Unconditionally. No strings attached. That's the Good News.

A Methodist Way of life has been around for a few years seeking to help us have a balanced commitment to worship, learning and caring, service and evangelism in our Christian living. It has sought to help us to grow in Christ and in the outworking of our Christian journey. At the beginning of our new Connexional year (i.e September) a new approach to the Methodist Way of Life has been made available and invites each of us on a journey. It begins with the title of this newsletter and has a strap line '**God longs to take you on the journey of a lifetime.**' Now that sounds exciting and like a journey I'd want to take – how about you?

Through the journey we are invited to explore twelve 'stations' in response to God's love and at each station we have the opportunity to **encounter** God, **grow**, **step out** and be **surprised**:

To **pray** daily

To **worship** with others regularly,

To **notice** God in scripture and the world

To **care** for ourselves and those around us

To **learn** more about our faith,

To be **open** in practicing hospitality and generosity

To **serve** folk in our communities and beyond

To **flourish** and care for creation and all God's gifts

To **challenge** injustice

To **tell** of the love of God

To **live** in a way that draws people to Jesus

To **share** our faith.

There will be lots more information coming to you soon, if you're excited and want to explore more go to [Methodistchurch.org](http://Methodistchurch.org).

As we prepare for this new journey, let's pray: God of love, God for all, your purposes are more beautiful than we could possibly imagine. Fill us with your Holy Spirit. Help us let go of all that holds us back. Open our lives and our churches to new seasons of humility and faith, of change and growth. Shake us up with the good news of Jesus and show us the way. **Amen.**

I look forward to sharing the journey with you.

Every blessing,

Rev. Christine

					October (Black History Month)				
					1	8	15	22	29
					26th Sunday in Ordinary Time	27th Sunday in Ordinary Time	Healthcare Sunday	29th Sunday in Ordinary Time	30th Sunday in Ordinary Time
<b>Lectionary Year (A)</b>					Ezekiel 18:1-4, 25-32	Isaiah 5:1-7	Isaiah 25:1-9	Isaiah 45:1-7	Leviticus 19:1-2, 15-18
(Principal Service)					Psalms 25:1-9	Psalms 80:7-15	Psalms 23	Psalms 96:1-9, (10-13)	Psalms 1
					Philippians 2:1-13	Philippians 3:4b-14	Philippians 4:1-9	1 Thessalonians 1:1-10	1 Thessalonians 2:1-8
					Matthew 21:23-32	Matthew 21:33-46	Matthew 22:1-14	Matthew 22:15-22	Matthew 22:34-46
Please Pray For:					Bradwell	Cross Heath	Halmer End	Higherland	Madeley
<b>Baldwins Gate</b>					A closing service was held on 16th July. We give thanks for the faithful service of all who have held office and worshipped in this church over many years.				
Wolstanton (95)	LS	10.30	StF		Singleton HF	Singleton HC RWC	R Jones	Barnett	Davies T
		3.00	MWB			6.30pm CS @ Bradwell			
Cross Heath (25)	CL	11.00	StF	NV	LA	Irvine	Singleton	Legge HC	N Jones
		3.00	MSB			6.30pm CS @ Bradwell			
Higherland (38)	CL	10.00	StF	MM	Kirk HC	Legge BB/GA enrolments	N Jones	LA	Matthews
		6.00				6.30pm CS @ Bradwell			Legge Messy Vintage
Madeley (20)	CL	10.30	StF	SoF 1234	Legge HC	LA	Ventom	Singleton	Legge HC
		3.00	MWB	NV		6.30pm CS @ Bradwell			
Silverdale (48)	CL	11.00	StF	MM	Café Church LA	Chadwick	Legge HC	Emmaus	Singleton
		5.00				6.30pm CS @ Bradwell			Refuel
Audley (35)	JV	10.30	StF	SoF 182	X	LA	X	Wakelin	X
		3.00	MWB	GNB	Singleton	6.30 pm CS @ Bradwell	Ventom HC B	X	Singleton HC
Bradwell (37)	JV	10.00	StF	SoF 182	Davies T HF	Ventom HC	LA	Sutcliffe	Dyble T
		3.00	MWB	NV H&P		6.30 pm CS HF			
Halmer End (24)	JV	10.30	H&P	SoF 182	Dyble T	LA	X	Ventom HC	Irvine
		3.00	MWB	GNB		6.30 pm CS @ Bradwell	Baker CA		
St Luke's (20)	JV	10.30	H&P	GNB	N Jones HF	LA	E Perry HC	Harrison T	Ventom
		3.00	MWB			6.30 pm CS @ Bradwell			
Printed Service for this week prepared by:					Legge	Heap	Ventom	Singleton	Legge
BGMC					Wednesday 18th October, 2.30 pm - Service - N Jones				

## Green Tips

- **Have your boiler serviced annually** to ensure it's running safely and efficiently.
- **Draught-proof your home** - one of the cheapest, most effective ways to save energy and money at home is to draught-proof windows, doors, letterbox, fireplaces and loft hatches.
- **Encourage hedgehogs** - hedgehogs have a voracious appetite for pests such as caterpillars, slugs and snails. They need easy access in and out of gardens. It is recommended that neighbours get together to arrange hedgehog holes between gardens. "This is simply a hole cut into the bottom of a fence – it should be around 13cm high and at least as wide, preferably in a sheltered corner.

-----  
**Foodbank** – please click on this link [here](#).

Thank you to everyone across the Circuit who gives regularly to Foodbank through their church. Foodbank remains open through these troubled times and demand for food is high. Can I please ask you to all keep on giving by taking your donations to your nearest Foodbank.



Clayton St Luke's host a session  
on Tuesday morning. 10.00am – 12 noon  
All Saints, Madeley host a session  
on a Wednesday morning. 10.30 am - 12.30 pm  
Cornerstone, High Street, Knutton, ST5 6BX  
On Wednesday afternoon 2.00 pm – 4.00pm  
Chesterton Pentecostal church  
on Thursday Morning. 10.00 -12.00 noon  
Newcastle Congregational church  
on Thursday afternoon. 2.00 pm – 4.00pm  
St Thomas church Kidsgrove  
on Friday afternoon 1.00 pm – 3.00 pm  
or you can take your contribution to our warehouse on the Parkhouse estate on a Monday  
afternoon or Wednesday morning ... please give us a ring if you want details of how to get  
there, it is on the Aspire work complex.

Your gifts large or small are very much appreciated and are a lifeline to those sadly more vulnerable than ourselves.

*Please give us a ring if you want to drop your gift off at our house!*  
*Carol and Marion Reddish TEL 01782 613265*

If you would like to make a monetary donation to Newcastle Staffs Foodbank you can contact the Trustee/Treasurer Paul A Roberts for details: -  
tel: 0300 102 9088 or email him on [accounts@newcastlestaffs.foodbank.org.uk](mailto:accounts@newcastlestaffs.foodbank.org.uk).

If you would like to Gift Aid your donation please visit the website or contact Paul A Roberts for details.

People can also contact [info@newcastlestaffs.foodbank.org.uk](mailto:info@newcastlestaffs.foodbank.org.uk) for details to donate food or money donations.

**At the present time Foodbank are short of the following items:-**

**Coffee**

**Tinned Vegetables**

**Cold Meat**

**Soup**

**Soap Powder**

**Noodles**

**Sugar**

**Tinned Fruit**

**Custard**

**Shaving Gel**

**Sponge Puddings**



### Prayer Request

During December, we will be embarking on the Posada project. This involves people and businesses in the communities of Halmer End and Alsager's Bank. Offering their homes as an inn for a day, as Mary and Joseph make their journey to Bethlehem. The Posada will be taken to each home and handed over using some set words.

Our Posada will be a model stable with statues which will be travelling from Halmer End Methodist on 30<sup>th</sup> November with a 'Posada launch' at 7pm (All Welcome) to Audley Methodist Church on Christmas Day for Worship at 10am.

More details from: Rev Joy, Helen Tripper or David Rowley

## Day Trip to Bury Market

**Saturday 14<sup>th</sup> October**  
**9.30 am start**  
**from Cross Heath Methodist Church**

**To book or for further details please contact Lorraine on 01782 614436**



North Staffordshire Methodist Circuit

## EXCITING NEWS



### IT'S ALL CHANGE AT THE METHODIST CHURCH

The congregation at Baldwins Gate Methodist Church recently decided to cease meeting for Sunday worship. We are now looking for new and creative ways in which the building might be used to benefit the community and to maintain a Methodist presence in the village.

### **BUT WE NEED YOUR HELP!**

**SATURDAY 14TH OCTOBER**  
**10AM - 12 NOON**

### **COFFEE & CHAT**

**for you to share your thoughts and ideas about how this lovely building can continue to serve the community in Baldwins Gate.**



### World Federation Day—Encounters at the Well

**Saturday 14th October 2023 10am to 3pm**

**At Trinity Methodist Church,**

**Wagg Street, Congleton CW12 4BA**

The well is at the heart of Biblical communities. It's not just a place for the Water of Life but a place of meeting, of challenge, of healing and reassurance. In our 2023 World Federation Day we will think about community - with the well at our heart we will think about the critical importance of the life-giving water, but we will also consider how we meet with others in a spirit of challenge, healing and reassurance. There will be worship, prayer and Bible study, stimulating presentation and creative expression.

Come to the well and be nourished! Refreshments, including lunch, provided.

Fee: this day is offered free of charge but please come ready to make a donation for lunch and, separately, for the work of the World Federation of Methodist and Uniting Church Women.

Bookings via Eventbrite – to help us make sure we have enough lunch! Visit [www.mwib.org.uk](http://www.mwib.org.uk) & follow the link from our home page.

Or Contact Margaret Lindley



**Invites you to  
the 156<sup>th</sup>**

# **Church Anniversary**

**A service of Celebration  
at 3.00 pm on  
Sunday 15<sup>th</sup> October 2023**

**Preacher: Rev. Roger Baker**

**Service followed by a Faith Tea. Please  
bring a contribution towards the tea.**

**Come and join the Celebration  
All are welcome**

There is no Morning Service this Sunday  
[www.halmerendmethodists.org.uk](http://www.halmerendmethodists.org.uk) & on Facebook

## **Godly Play as Bible Study**

Story is one of the most ancient forms of knowing. It is the way our Christian heritage has been passed down to us. And story forms the foundation of Godly Play. It invites you to sit as part of a circle and listen as the stories of the Bible are told through word and action. It allows you to immerse yourself in the stories as an act of meditation and prayer and ultimately to encounter God. As the stories are told you sit and listen and at the end of the storytelling you are invited to consider a number of 'I wonder questions'. Questions posed by the storyteller that ask you to reflect on what you have heard. Questions like:

I wonder what part of the story was most important to you?

Or

I wonder where you are in the story?

Or

I wonder if there is a part of the story we can leave out and still have all the story we need?

There are no right or wrong answers to any of the questions, they are a means by which you are invited to wonder deeply about the story and what it says to you. Then when the story is put away there is time to respond to all that you have heard and wondered about. It may be that you want to re-read the story again for yourself, paint, draw, model or write a response - the choice is entirely yours.

At the end of the response time we gather back together for refreshments before drawing our time together to an end.

If this is something you think you might like to try then our

next Godly play session will take place on **Monday 16<sup>th</sup>**

**October 6.30-7.30 pm** and repeated on **Tuesday 17<sup>th</sup>**

**October 1.00-2.00 pm.** Both sessions will be held at

**Wolstanton Methodist Church.** Come and see, wonder, and reflect deeply about stories you thought you knew.

Karen Barnett

## **Baldwins Gate Methodist Community**

**(Baldwins Gate, Newcastle, Staffs, ST5 5DA)**

# **Mid-Week Service**

**on the third Wednesday of each month at 2.30 pm**

**18<sup>th</sup> October 2023 – Service – Mr N Jones**

**15<sup>th</sup> November 2023 – Holy Communion – Rev'd J Ventom**

**20<sup>th</sup> December 2023 – Service – Mrs R Jones**

**Please come and join us.**

**All are very welcome to attend.**



**Higherland Church Coffee Bar**  
**2pm-4pm Monday 23<sup>rd</sup> October**



**Everyone welcome to come and  
join in the natter & laughs.**

**Free cake & drinks.**

**Audley Methodist Church**

Invites you to



**Pause  
for Thought**

Traditional Sunday Worship not work for you?  
Come and try 'Pause for thought' where we will  
explore faith and it's relevance for our lives  
through music, Conversation and Coffee.

7pm -7.30pm

Wednesday 25<sup>th</sup> October

Wednesday 15<sup>th</sup> November

Wednesday 20<sup>th</sup> December

Wednesday 28<sup>th</sup> February

Wednesday 20<sup>th</sup> March

**WOLSTANTON METHODIST CHURCH**

Invites you to

**'ELDERBERRIES'**

embracing all ages and various interests

MONDAY 25<sup>th</sup> OCTOBER at 2.30p.m.

'MUSIC AND SONG'

With the UKULYMIES

MONDAY 13<sup>th</sup> NOVEMBER at 2.30p.m.

'MIDLANDS AIR AMBULANCE'

With Sally Mc.Mahon

**COFFEE, CAKE & CHAT**


An opportunity to renew friendships and make new

## Monthly 6pm Coffee Bar Worship Time

Songs, Craft, Prayers, Smiles, Coffee, Tea  
Biscuits, Chatter, welcoming, friendly.

# Higherland Church

**Messy Vintage**

from The Bible Reading Fellowship 

*Last Sunday  
in the month*

***Come along @ 6pm Sunday 29<sup>th</sup> October***

Join us at  
Audley Methodist Church



Future Dates:

Wednesday 1st November 2023

Wednesday 14th February 2024

Wednesday 3rd April 2024

Wednesday 29th May 2024

Wednesday 24th July 2024

10:30am to 12:30pm

for more details contact:

Rev. Joy 01782 720267

joy.ventom@methodist.org.uk

Sarah (office) 01782 722755

audleymethodist@btconnect.com

## CHRISTMAS CRAFT MARKET



**Saturday 18th November  
10:30am to 12:30pm**

**Original Artwork, festive  
homemade gifts and  
more**

**AT AUDLEY  
METHODIST CHURCH**

**Refreshments available  
free entry & parking**







The Methodist Church



# Mental Health First Aid

Updated course with a  
new App giving 3 years  
support from MHFA

In person course over 2 days,  
9am to 5pm at Church House, Penrith on:

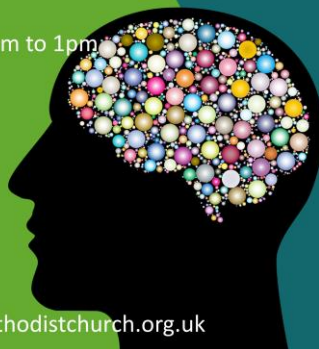
- Wednesday 18th October and
- Thursday 19th October 2023

Online course over 4 sessions, 9am to 1pm

- Tuesday 7th November
- Wednesday 8th November
- Tuesday 14th November
- Wednesday 15th November

Facilitated by Brec Seaton

and Ruth Jefferies: [seatonb@methodistchurch.org.uk](mailto:seatonb@methodistchurch.org.uk)



## What is Mental Health First Aid?

Mental Health First Aid (MHFA) is an internationally recognised training course which teaches people how to spot the signs and symptoms of mental ill health and provide help on a first aid basis. For more information visit [www.mhfaengland.org](http://www.mhfaengland.org)

## What does it cost?

Usually costing £325, the Methodist Church are subsidising the price to £50 (non refundable) for members of, and those with a connection to, the Methodist Church. Further help with funding is available for Methodist members within the NW&Mann Region. Contact Brec Seaton for more information.

## How to book your place:

In person course October 2023:

<https://MHFA181023.eventbrite.co.uk>

On line course November 2023:

<https://MHFA071123.eventbrite.co.uk>

Bookings close 2 weeks before the start of each course. Please note that by booking you are committing to paying for a place and attending all the sessions.







Christian Resources for Life

@ Methodist Book Centre

Support your local, independent  
Christian bookshop



**In Store**

**Online**



[www.crfl.co.uk](http://www.crfl.co.uk)

Gitana Street, Hanley, ST1 1DY

01782 212146



**Madeley Methodist Church**  
**invites you to join us at our**



**Warm Space**  
**Elevenses**



**On Wednesdays at 11am**



**Everyone Welcome**



10.30am - 12.30pm, last Thursday of every month, starting Thursday 27th October.

Fun, explore together in lots of creative, interactive and fun ways.  
A great opportunity to enjoy some time together.

For more information please contact Phil or Jeanette Hodges  
on 01782 634766 or look on our Facebook page.

**Silver  
Service**

**..on the 1<sup>st</sup> & 3<sup>rd</sup> Thursdays of every month..  
..beginning at 11:30am..**

**1<sup>st</sup> Thursday = Communion Service : 3<sup>rd</sup> Thursday = Activity Service**

**at Silverdale Methodist Church,  
Earl Street (behind the Chip Shop!)  
ST5 6NF**

Find us on Facebook: "Silverdale Methodist Church"  
Visit our website: [www.silverdalemethodistchurch.org.uk](http://www.silverdalemethodistchurch.org.uk)

**SILVERDALE METHODIST CHURCH**

There's nothing like a good cuppa coffee  
and a friend like you to share it with!



Let's catch up!

423Greetings.com

**WHY NOT CATCH  
WITH FRIENDS OLD  
AND NEW**

**BRADWELL METHODIST  
CHURCH  
THURSDAY'S 10 - 12**



**SILVERDALE  
METHODIST  
CHURCH**



**REFUEL**

worship & the word  
**FOLLOWED BY FOOD!**

Join with us on the **LAST SUNDAY OF  
EVERY MONTH**, at **5PM**, for 1-hour of..

**PRAISE &  
WORSHIP**

**..and then stay to share food together.**

all-age & interactive, informal & relaxed – a Worship Experience for all



Like us on

Facebook



Follow us on

Instagram

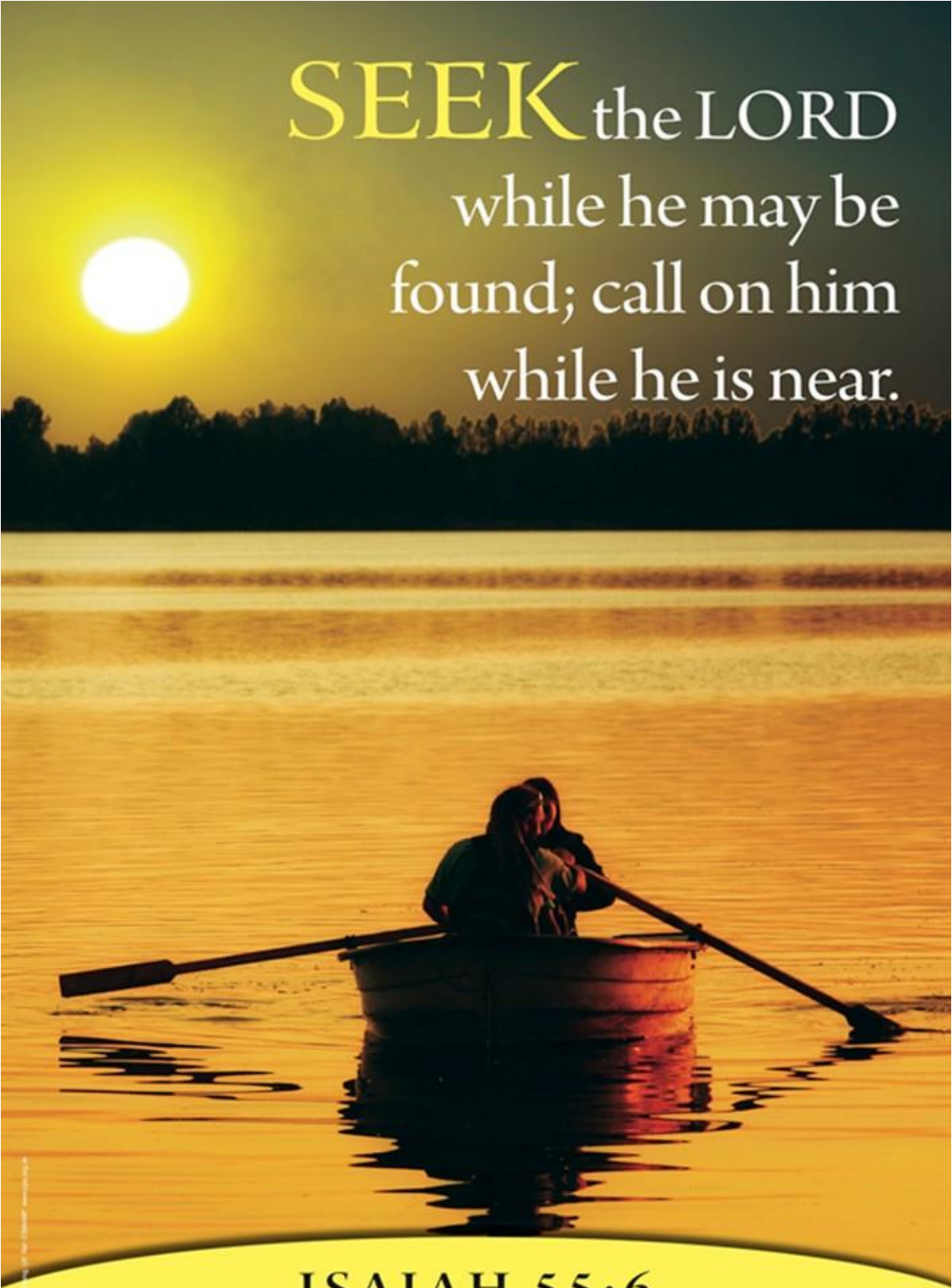


Find us on

YouTube





A person is rowing a small wooden boat on a calm body of water during sunset. The sun is a large, bright yellow circle in the upper left sky, casting a warm glow over the scene. The water reflects the golden light, and the distant shoreline is silhouetted against the bright sky. The person in the boat is seen from behind, using two long oars to propel the boat forward. The overall mood is peaceful and contemplative.

**SEEK** the LORD  
while he may be  
found; call on him  
while he is near.

ISAIAH 55:6